

## Luciferin Derivatives

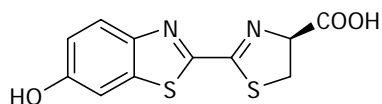
### D-Luciferin

**LUCI-10001**

$C_{11}H_8N_2O_3S_2$ , M = 280.32 g/mol

10 g

[2591-17-5]



50 g

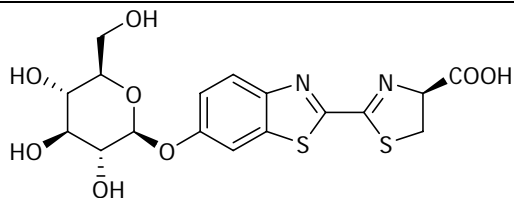
100 g

### 6-O-β-D-Glucopyranosyl-luciferin

**LUCI-10002**

$C_{17}H_{18}N_2O_8S_2$ , M = 442.46 g/mol

1 g



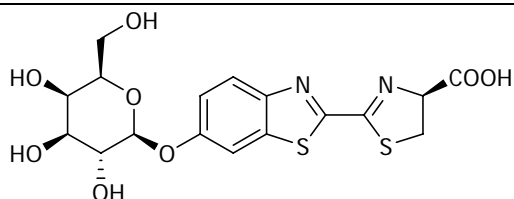
2.5 g

### 6-O-β-D-Galactopyranosyl-luciferin

**LUCI-10003**

$C_{17}H_{18}N_2O_8S_2$ , M = 442.46 g/mol

1 g



2.5 g